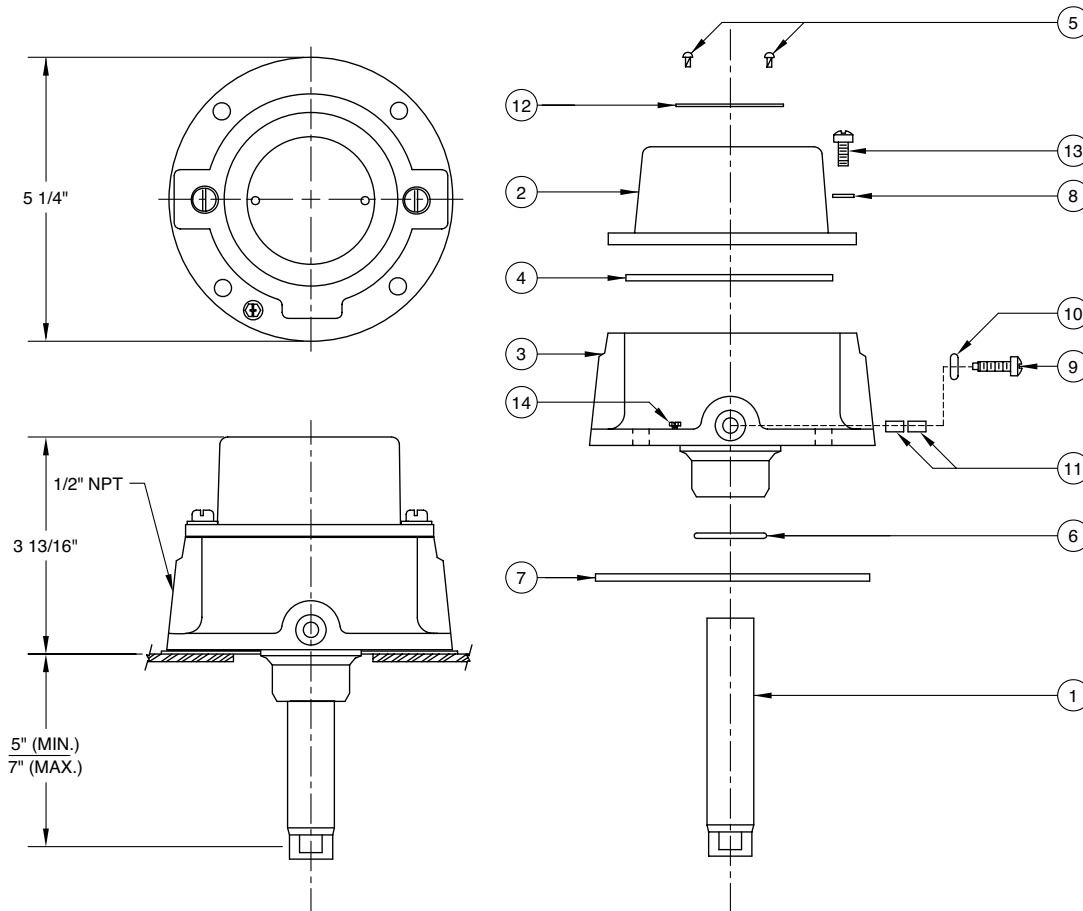




## Model #1200 Optic Sensor (5-Wire Flanged)

### Replacement Parts

Rev. 0, January 2003



ITEM	PART NUMBER	DESCRIPTION	QTY.
1	1300-1300	OPTIC SENSOR	1
N/A	1255-1255	PROBE HOUSING (INCLUDES ALL ITEMS EXCEPT ITEMS 1, 5 & 12)	N/A
2	C40017A	UPPER HOUSING CAP	1
3	D40013A	LOWER HOUSING BODY	1
4	H50062M	O-RING (CAP SENSOR)	1
5	H50066M	DRIVE SCREW	2
6	H50080M	O-RING (SENSOR TUBE)	1
7	H50081M	GASKET (BASE)	1
8	H50086M	WASHER (1/4" SPLIT, S.S.)	2
9	H50087M	PROBE ADJ. SET SCREW (1/4-20 X 3/4 STL, FIL, S.S.)	1
10	H50088M	O-RING (BODY ADJUSTING SCREW)	1
11	H50089M	PLASTIC INSERT	2
12	H50090M	NAME PLATE (1200 SENSOR)	1
13	H50153M	SCREW (1/4-20 X 1/2 STL, FIL, S.S.)	2
14	H50524M	GREEN GROUNDING SCREW (#8-32 X 3/8 CMB, BND, DC)	1
15	H50070M	PIPE PLUG (1/2" N.P.T.) (NOT SHOWN)	1