

## 2-Wire Optic Bottom Sensors

### FEATURES AND BENEFITS

The OPW-FTG 2-Wire Optic Bottom Sensors are designed for compartment empty detection of liquid petroleum products. Not only are they instantly permissive and specially designed for optimal communication with our Rack Monitors (conforming to EN13922), but they are also compatible with all other brands of Rack Monitors which conforms to EN13922 standards.



- In accordance with:
  - EN13922
  - ATEX
  - API RP 1004
- Certified for use in zone 0
- Intrinsically safe signals
- Instant permissive signal (no warm up time)
- Continuously checking of system operation such as wiring, sockets and sensor itself
- Temperature range -20°C to +70°C
- Easy adjustable shaft when shorter length is necessary
- Immediate system shutdown (250 ms) in case of compartment 'wet' detections
- Immediate re-permit in case of compartment 'dry' detection

### CERTIFICATES

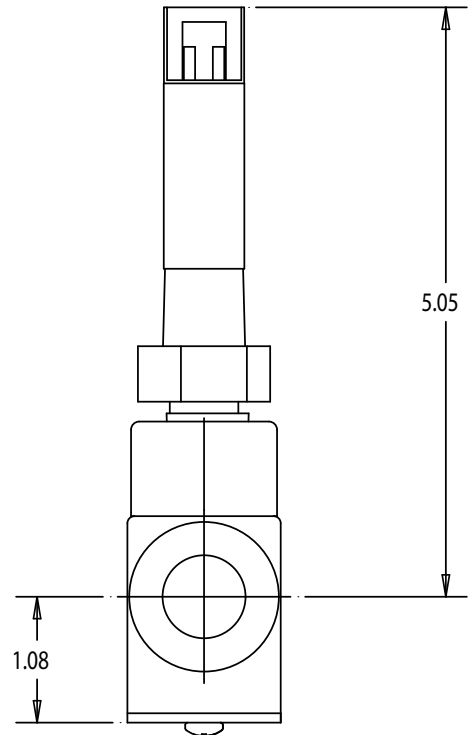
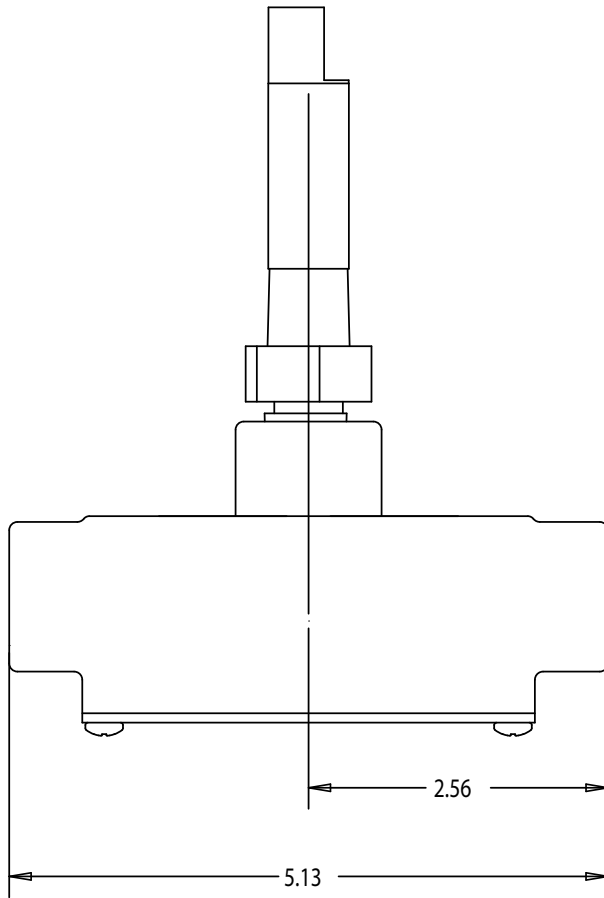
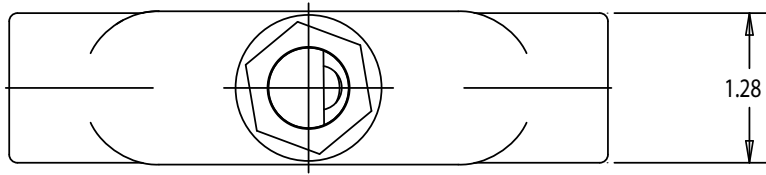


ATEX, EN13922



ATEX, EN13922

## SPECIFICATIONS



### General Spec's EURO100-Line Bottom Valves

■ Zone specification	Zone 0
■ Working Temperature	-20° to +70°C
■ Signals	Intrinsically safe
■ Weight	320 g

All dimensions are in mm

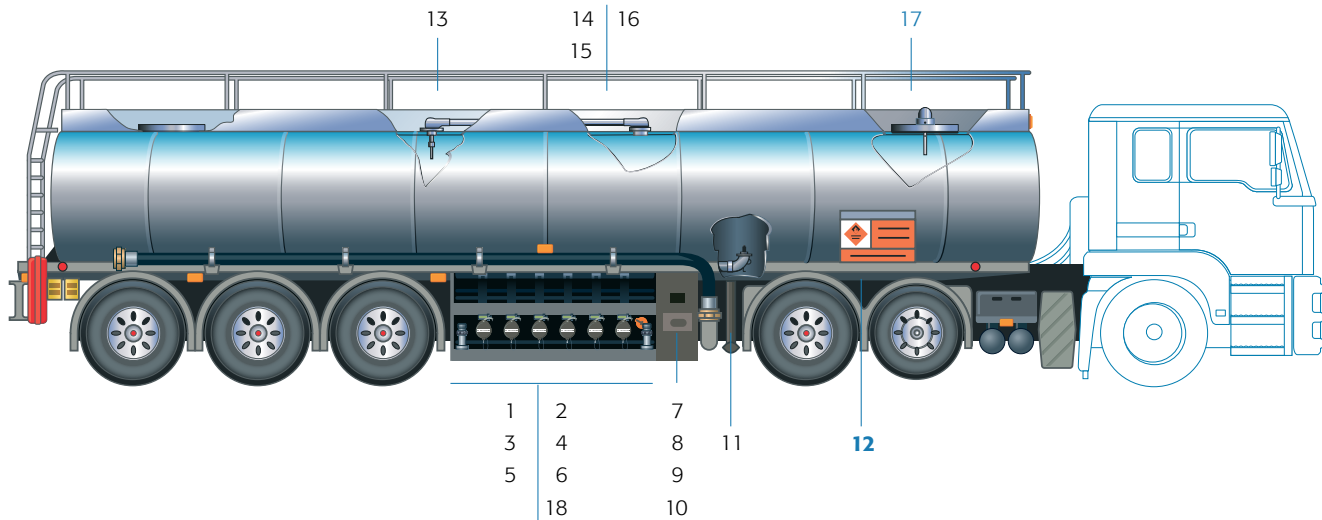
## RELATED PRODUCTS

<b>Art. number</b>	<b>Description</b>
4100-series	6-Pin Optical Socket
4401-series	10-Pin Optical Socket
2100E-L30	30m 5-Wire straight cable conform EN13922
EL05116	Cable Gland HSK-K –EX, M20x1,5, 6-12mm blue
EL00001E	Ground Bolt
1111-series	5-Wire Optic Sensors
1301-series	2-Wire Optic Sensors
ROMII-Plus	On-board Monitoring System
SCS-300	Sealed Parcel Delivery System

## ORDERING SPECIFICATIONS

1000R	Optic sensor, rom retain sensor with bottom inline housing
-------	--

## Providing expert cargo-tank solutions



No.	Description	Article
1	API Tank Truck Adaptor	891-series
2	Dust Cap	875-AL40
3	Air Interlock for API	200
4	Gravity Coupler	876-series
5	Vapour Recovery Adaptor	633LVB
6	Air Interlock for VR-Adaptor	201
7	Socket	4100-series 4401-series
8	Onboard Monitoring System	ROMII Plus
9	Sealed Parcel Delivery System	SCS-300
10	Pneumatic Controls	PCU-series PCP-series
11	Bottom Valve	EURO100-series
<b>12</b>	<b>Retain Sensor</b>	<b>1000R</b>
13	Overfill Prevention Sensor	1111-series, 5-wire Optic 1551-series, 2-wire Optic
14	Manhole Cover	T400-series, 20" Bolted Aluminium / Carbon Steel / Stainless Steel 58-00-28D/R, Recessed 20" bolted Aluminium
15	Vapour Recovery Valve	T195-series
16	Pressure/Vacuum-Vent	NV3000E
17	Vapour Line Valve	1995TWD
18	Civaflo Manifold	10540M