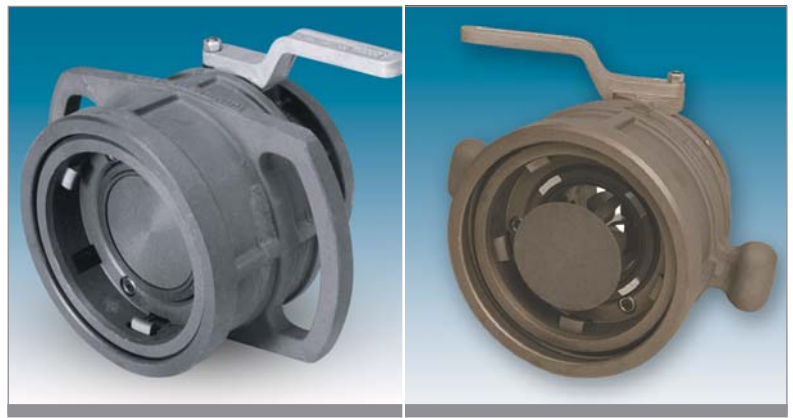


1004D2/1005E API Coupler

The OPW Engineered Systems 1004D2 is the standard in “drip-less” bottom loading couplers and a proven performer at major oil terminals worldwide. The 1004D2 mates with all 4” bottom loading adaptors built in accordance with API RP-1004 requirements to significantly reduce liquid loss at disconnect in gasoline applications.

Benefits

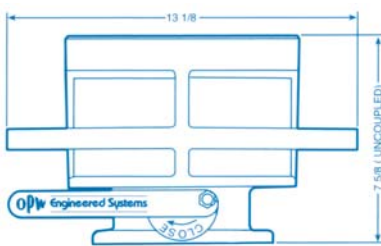
- **Designed to effectively handle all fuels** – high performance Viton® seals are standard, providing excellent wear and fuel resistance. Compatible with gasoline with up to 20% MTBE content. Suitable for use at service temperatures as low as -10°F. Other seals include Buna-N, Chemraz®, and Kalrez®.
- **Designed for “less mess” at your loading rack** – the new, easy, self-aligning 5-Cam design ensures a tight connection to truck adaptor and resists side forces. The 1004D2 cannot be opened unless it is properly connected to an API adaptor nor can it be disconnected when the poppet is open.
- **Eliminates risk of nose seal “blow out”** – beveled for superior sealing, the new high retention nose seal is specifically designed to eliminate the risk of seal “blow out” due to line over-pressurization and thermal expansion.
- **Long-life performance** – extended wear operating lever has a built-in roller bearing to provide smoother operation and extended life.
- **Smoother, easier operation** – the built-in roller bearing handle and Teflon® impregnated poppet and cylinder provide for smoother, easier movement.
- **Easy to grasp, even with gloves** – large handles provide for easy handling.
- **Easy and inexpensive to maintain** – seal and conversion kits available
- **Lightweight** – only 8.5 lbs.
- **Easy-to-change nose seal** – simply pull out over the poppet without disassembly.
- **Dependable parts** – all wetted parts are stainless steel or hard-coated anodized aluminum; internal linkage parts are hardened stainless steel.



Features

- **Heavy-duty body**
- **Heavy-duty internal components** – stainless steel and Teflon® impregnated hard-coat anodized aluminum internal parts
- **High retention nose seal** – beveled for superior sealing
- **Heavy-duty sleeve**
- **Rugged operating handle** – with built-in roller bearing for smooth operation
- **Large, convenient grasp handles**
- **Available seals include** – Teflon®, Viton®, Buna-N, Kalrez® and Chemraz®
- **Coupler available in 4” size only**
- **Secure cylinder** – series of three retainers prevent the cylinder from inadvertently coming out of the coupler body
- **Shaft Seal** – simple and reliable, consisting of a single heavy cross-section O-ring
- **300 psi (20 bar) pressure rating** – reinforced internal parts minimize effects of thermal expansion
- **Seal Kits** – include everything needed to change out all seals in the 1004D2 Bottom Loading Coupler. Available in high-performance Viton® (1004D2SRK) and Buna-N (1004D2SRK-0401)
- **Conversion Kits** – available to convert a 1004 to a 1004D2. Includes poppet, cylinder and beveled nose seal, shaft seal, cylinder seal and other items included in all OPW coupler repair kits. High performance Viton® (1004D2CK-0402) or Buna-N (1004D2CK-0401)

Ordering Specifications



NUMBER	DESCRIPTION	SIZE	CONSTRUCTION	SEALS	WT.
1004D2-0401	High Pressure Drip-Less API Bottom Coupler	4"	Aluminum	Buna-N	18.5 lbs.
1004D2-0402	High Pressure Drip-Less API Bottom Coupler	4"	Aluminum	Viton®	18.5 lbs.
1005E-0401	5-Cam API Coupler with Grasp Knobs – 350 PSI	4"	Aluminum	Buna-N	19.0 lbs.
1005E-0402	5-Cam API Coupler with Grasp Knobs – 350 PSI	4"	Aluminum	Viton®	19.0 lbs.

IMPORTANT: OPW products should be used in compliance with applicable federal, state, provincial, and local laws and regulations. Product selection should be based on physical specifications and limitations and compatibility with the environment and materials to be handled. OPW MAKES NO WARRANTY OF FITNESS FOR A PARTICULAR USE. All illustrations and specifications in this literature are based on the latest product information available at the time of publication. OPW reserves the right to make changes at any time in prices, materials, specifications and models and to discontinue models without notice or obligation.